

Figure 1. (a) Complete region of the *fimH* gene (903 bp) present in the UPEC-46 strain. In green, the oligonucleotide sequence of primers (FwRedFimH and RvRedFimH) used for amplification of the fragment *fimH:clo* (1,175 bp), from pKD3 plasmid. **(b)** Amplification product of the *fimH:clo* using UPEC-46 as template. The arrow indicates the correct size of the *fimH:clo* fragment amplified (1,175 bp). M: Low Mass DNA ladder (Invitrogen).

A

```

> fimH (903 bp)
ATGAAACGAGTTATTACCCTGTTTGCTGTACTGCTGATGGGCTGGTCGGTAA
ATGCCTGGTCATTCGCCTGTAAAACCGCCAATGGTACCGCTATCCCTATTGG
CGGTGGCAGCGCCAATGTTTATGTAAACCTTGCGCCCGCCGTGAATGTGGG
GCAAACCTGGTCGTGGATCTTTCGACGCAAATCTTTGCCATAACGATTATC
CGGAAACCATTACAGACTATGTCACACTGCAACGAGGCTCGGCTTATGGCAG
CGTGTTATCTAATTTTTCCGGGACCGTAAAAATATAGTGGCAGTAGCTATCCAT
TTCCTACCACGAGCAAACGCGCGGTTGTTTATAATTGAGAACGGATAA
GCCGTGGCCGGTGGCGCTTTATTTGACGCCTGTGAGCAGTGCGGGCGGGG
TGGCGATTAAGCTGGCTCATTAAATGCGGTGCTTATTTGCGACAGACCAAC
AACTATAACAGCGATGATTTTCAGTTTGTGTGGAATATTTACGCCAATAATGAT
GTGGTGGTGCCTACTGGCGGCTGCGATGTTTCTGCTCGTGATGTCACCGTTA
CTTGCCGGACTACCCTGGTTTCAGTGCCAATTCCTTACCCTTTATTGTGCG
AAAAGCCAAAATCTGGGGTATTACCTCTCCGGCACAACCGTAGATGCGGGCA
ACTCGATTTTACCAATACCGCGTCGTTTTACCAGCGCAGGGCGTCGGCGT
ACAGTTGACGCGCAACGGTACGATTATTCCAGCGAATAACACGGTATCGTTA
GGAGCAGTAGGGACTTCGGCGGTAAGTCTGGGATTAACGGCAAATTACGCA
CGTACCGGAGGGCAGGTGACTGCAGGGAATGTGCAATCGATTATTGGCGTG
ACITTTGTTTATCAATAA

```

B

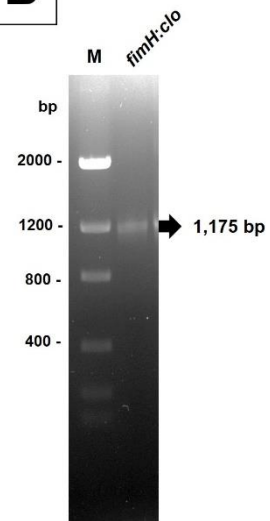


Figure 2. Amplification product corresponding to the upstream and downstream regions of *fimH* gene, using the primers FimH-Fw and FimH-Rv, for the five transforming strains (#1fimH to #5fimH). In the UPEC-46 strain, there was amplification only of the *fimH* gene and adjacent regions corresponding to 1,122 bp. As for the transforming strains (#1fimH to #5fimH), the amplification product was larger (~1.4 kb), corresponding to the recombined *fimH:clo* fragment. M: 1 Kb molecular weight marker plus DNA ladder (Invitrogen).

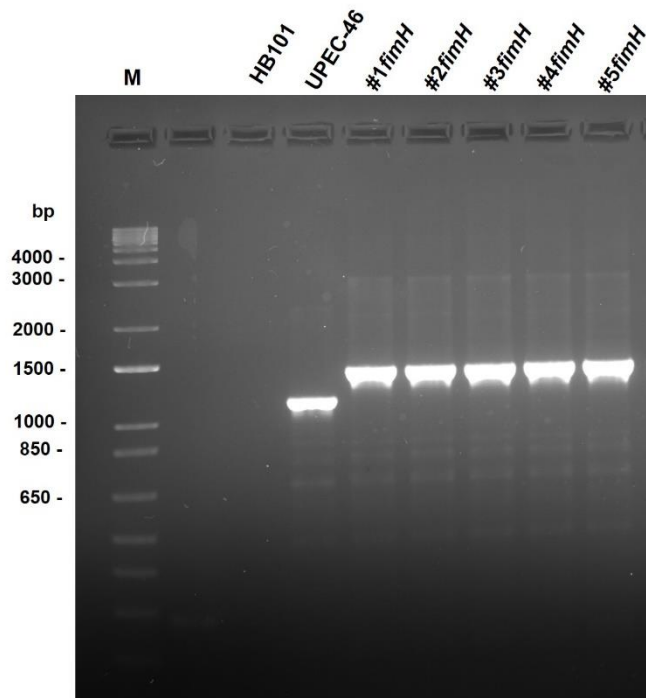


Figure 3. Mutagenesis scheme by λ Red system used in the *fimH* gene mutation from UPEC-46::*afpA* strain. CLO: chloramphenicol.

