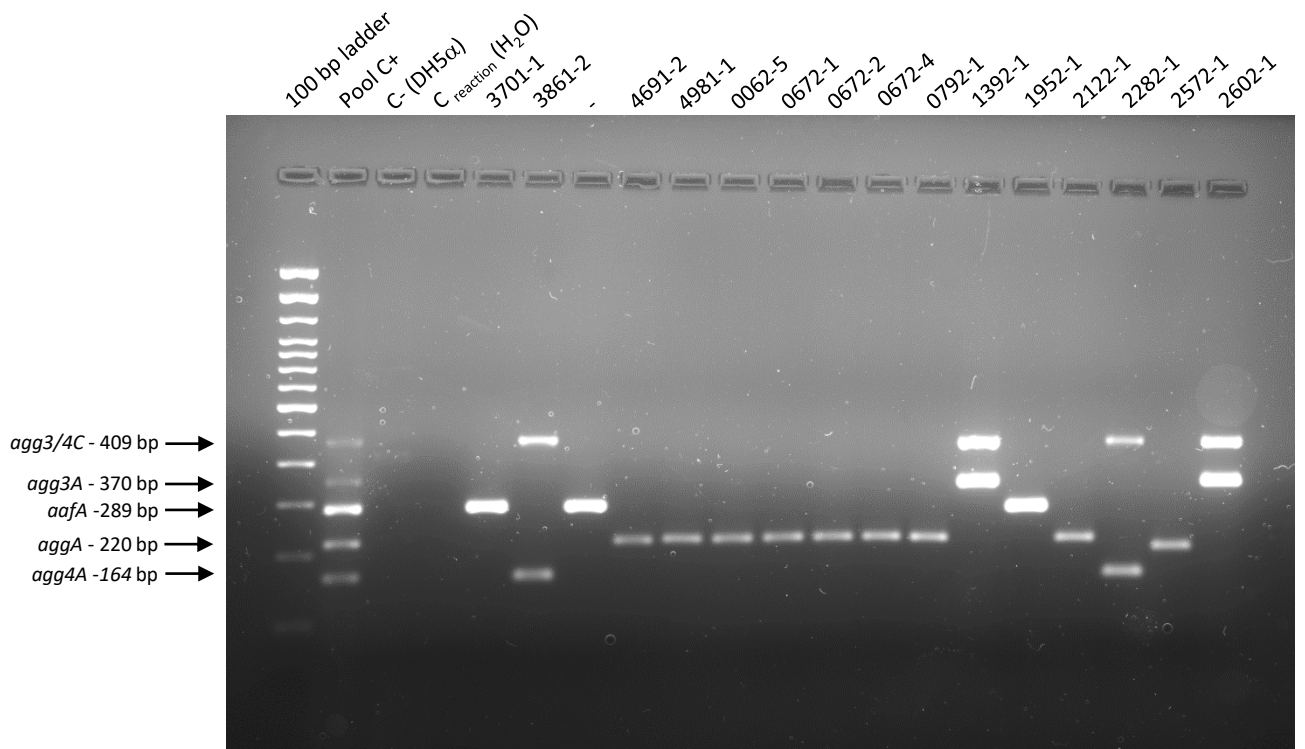
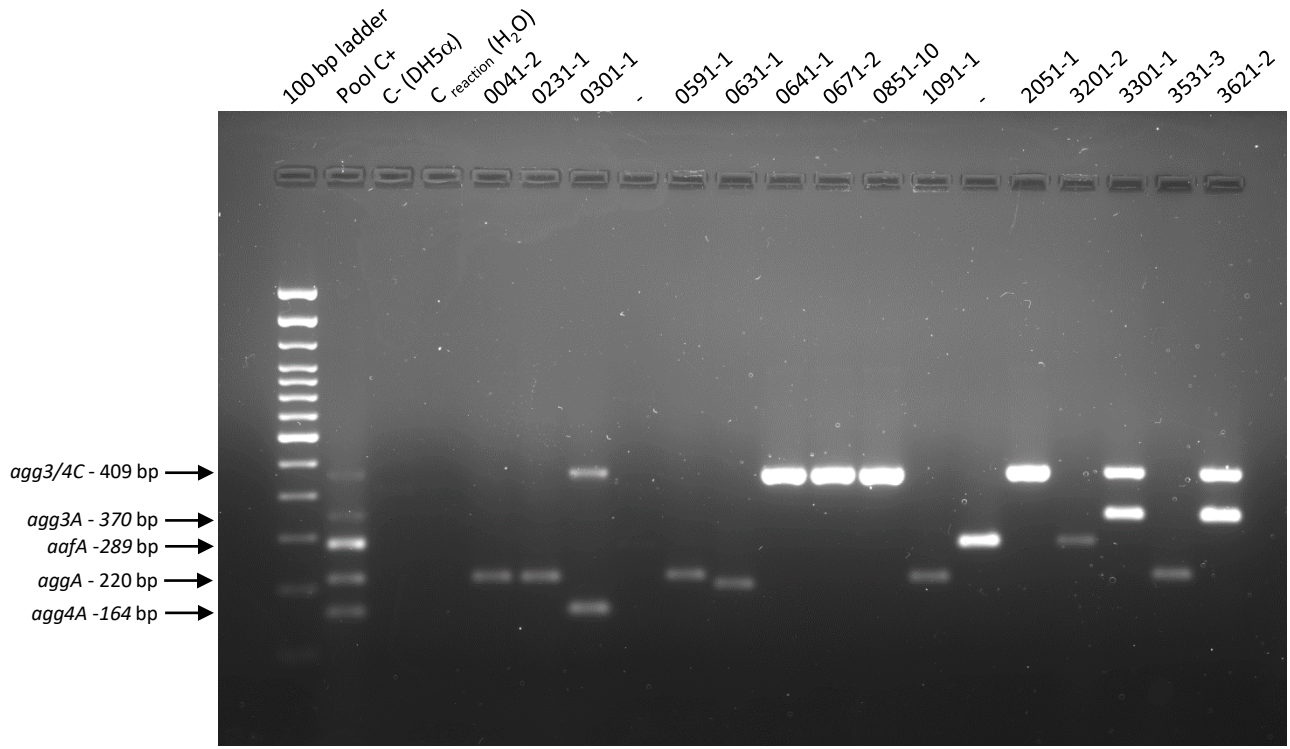
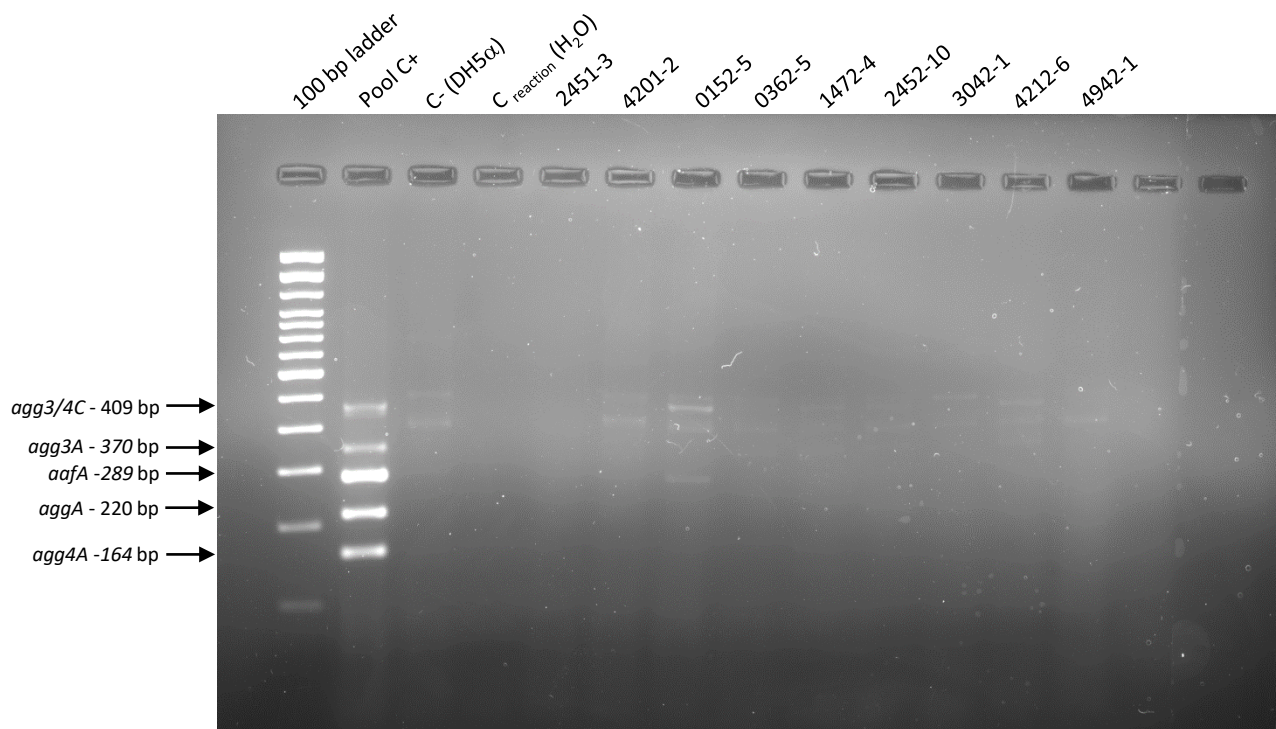
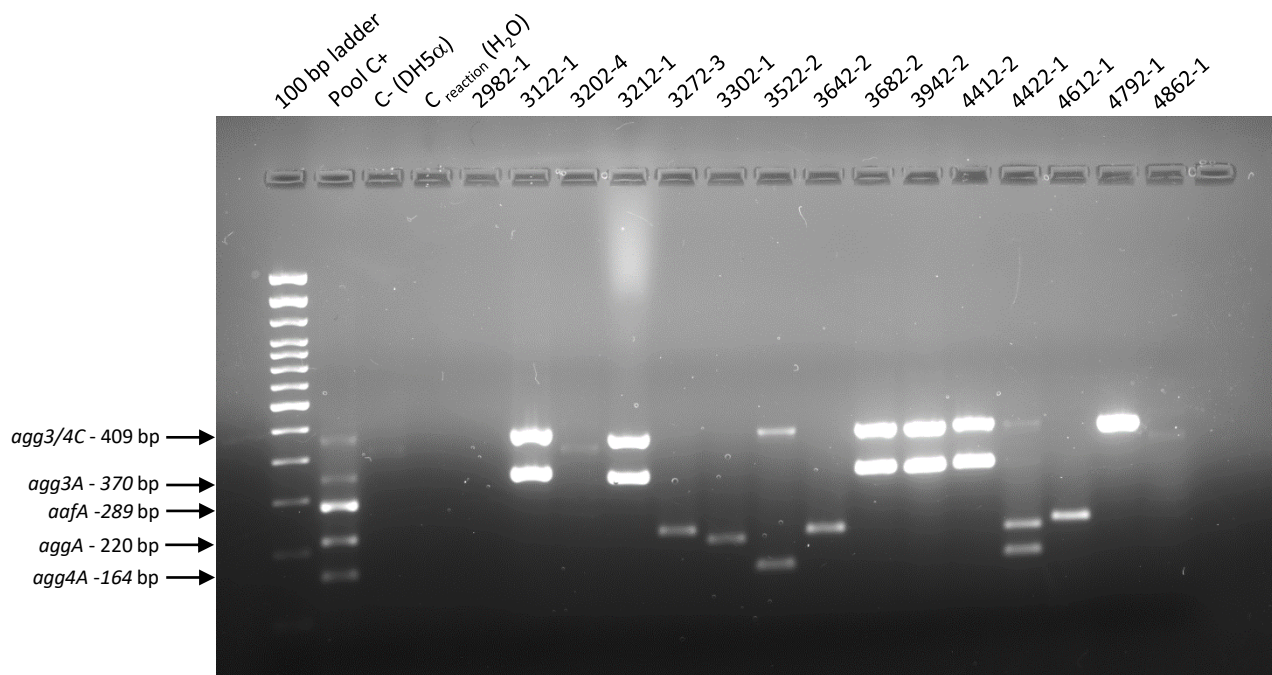


PCR screening for genes related to AAF/I, II, III, and IV - agarose gels

EAEC strains from Gomes *et al.* (a)





Notes:

- (a) Gomes TAT, Vieira MAM, Abe CM, Rodrigues D, Griffin PM, Ramos SRTS. Adherence patterns and adherence-related DNA sequences in *Escherichia coli* isolates from children with and without diarrhea in Sao Paulo City, Brazil. J Clin Microbiol. 1998;36:3609–3613. DOI: <https://doi.org/10.1128/jcm.36.12.3609-3613.1998>.
- (b) Lanes marked “-” are not part of this study.