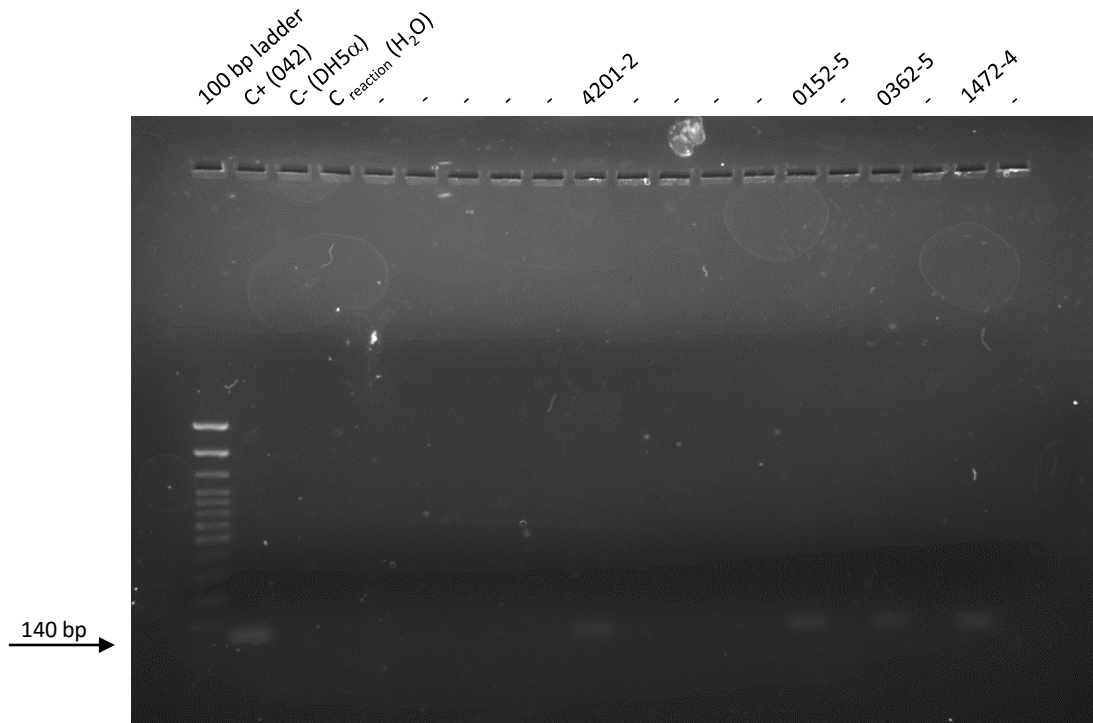
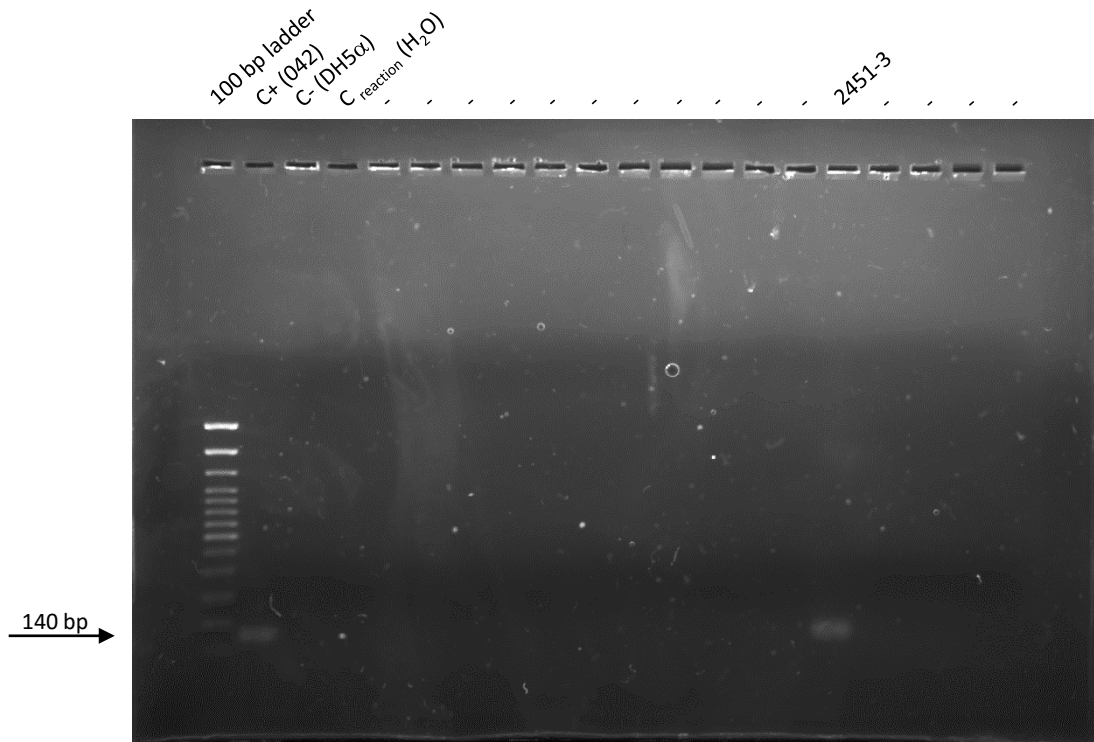
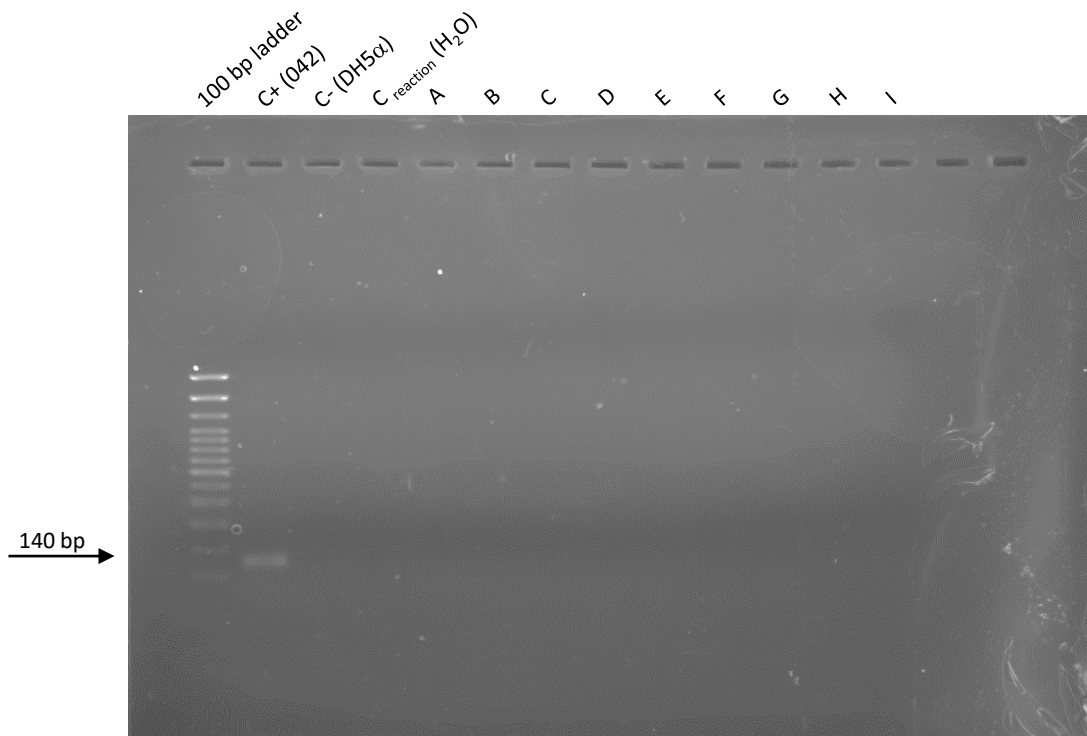
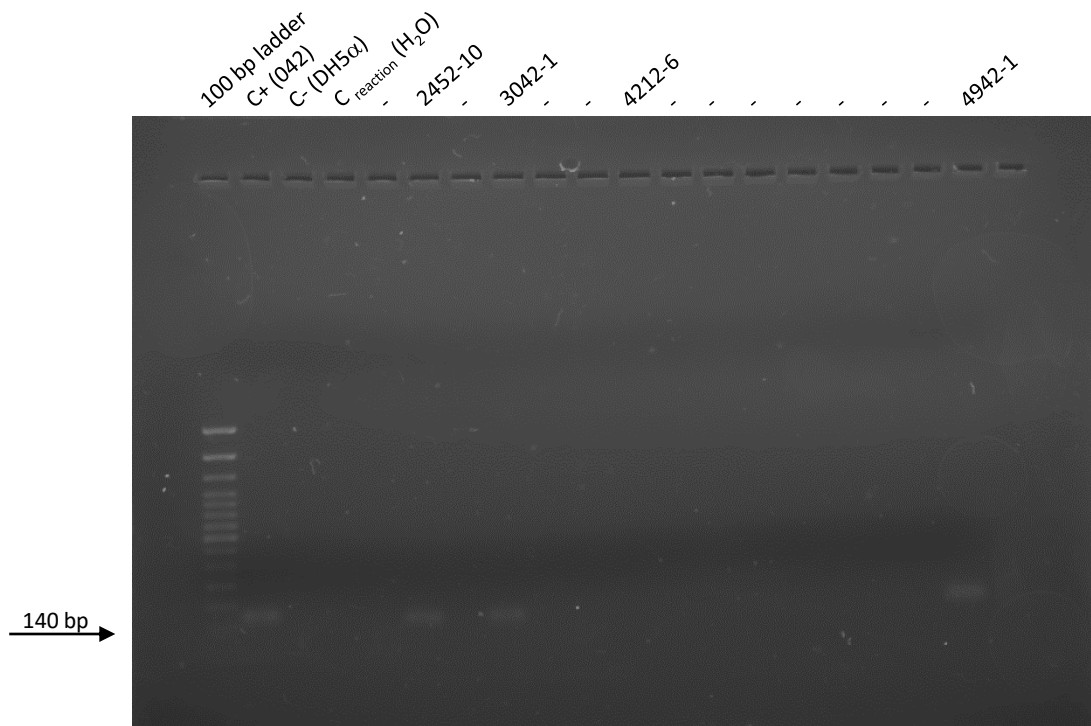


PCR screening for *afpA1* - agarose gels

EAEC strains from Gomes *et al.*, 1998 (a)





POOLS								
A	B	C	D	E	F	G	H	I
0041-2	0641-1	2051-1	3701-1	62-5	1392-1	2602-1	3272-3	3942-2
0231-1	0671-2	3201-2	3861-2	672-1	1952-1	2982-1	3302-1	4412-2
0301-1	0851-10	3301-1	4691-2	0672-2	2122-1	3122-1	3522-2	4422-1
0591-1	1091-1	3531-3	4981-1	0672-4	2282-1	3202-4	3642-2	4612-1
0631-1		3621-2		0792-1	2572-1	3212-1	3682-2	4792-1
								4862-1

Notes:

- (a) Gomes TAT, Vieira MAM, Abe CM, Rodrigues D, Griffin PM, Ramos SRTS. Adherence patterns and adherence-related DNA sequences in *Escherichia coli* isolates from children with and without diarrhea in Sao Paulo City, Brazil. J Clin Microbiol. 1998;36:3609–3613. DOI: <https://doi.org/10.1128/jcm.36.12.3609-3613.1998>.
- (b) Lanes marked “-” are not part of this study.